



# CHURCH PARK

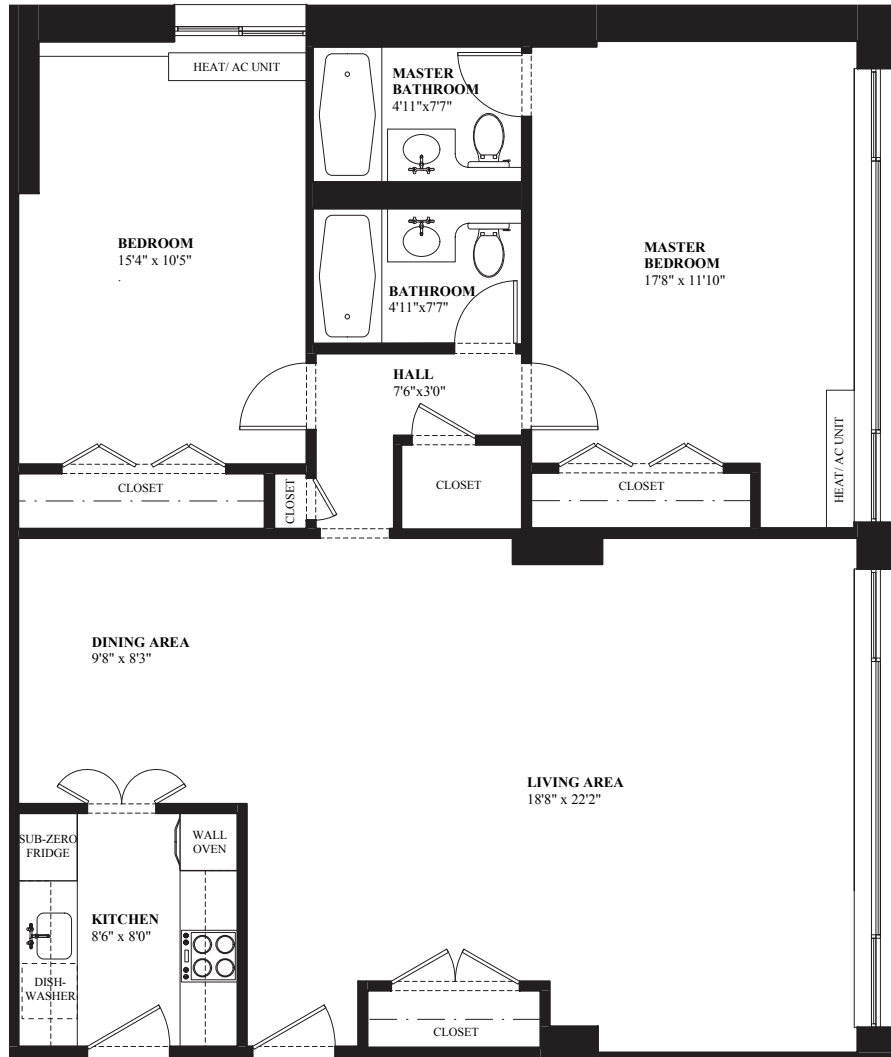
A P A R T M E N T S

221 MASSACHUSETTS AVE, BOSTON 02115

# HEREFORD

TWO BEDROOM – 1066 SQ. FT.

MASSACHUSETTS AVENUE



This floor plan is intended for illustrative purposes only. Dimensions are approximate and configurations may vary slightly.



For more information or to set up an appointment, please contact:

**Joe Armstrong**  
 Leasing Manager – REALTOR®  
 Office 617 570-0099  
 Mobile 617 388-6621  
 Fax 617 570-0011  
 jarmstrong@prubostonrealty.com



## Prudential

Prime Properties  
Boston Realty Group