



CHURCH PARK

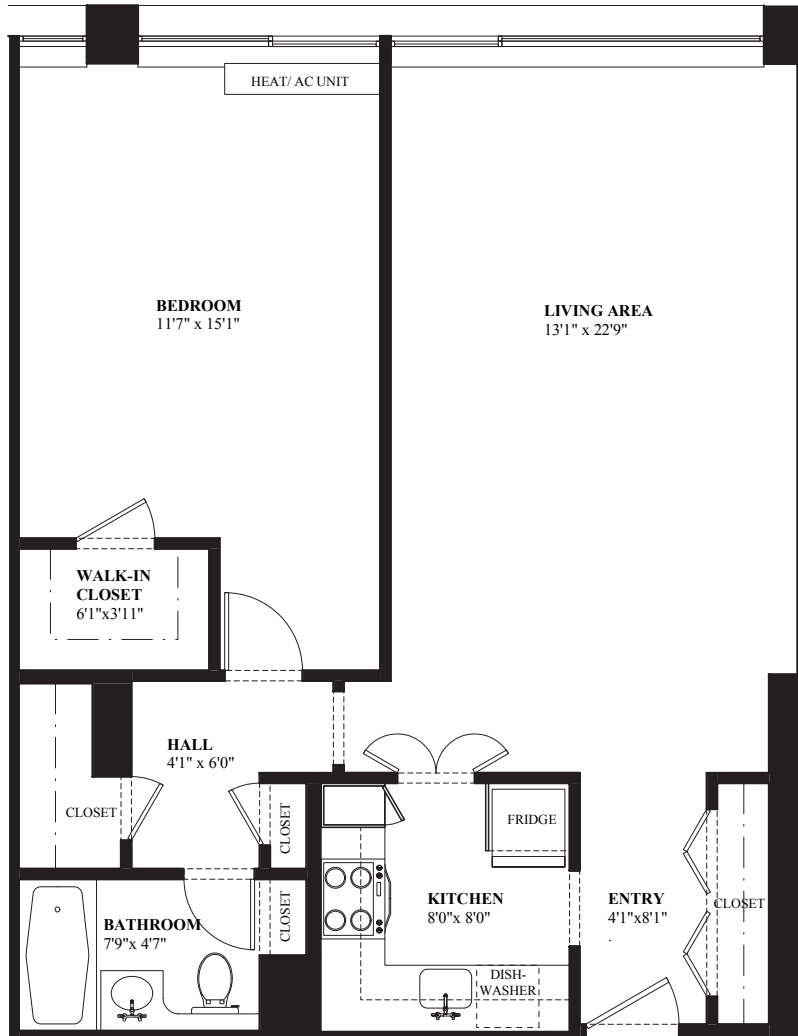
A P A R T M E N T S

221 MASSACHUSETTS AVE, BOSTON 02115

EXETER I

ONE BEDROOM – 765 SQ. FT.

MASSACHUSETTS AVENUE



This floor plan is intended for illustrative purposes only. Dimensions are approximate and configurations may vary slightly.



For more information or to set up an appointment, please contact:

Joe Armstrong
 Leasing Manager – REALTOR®
 Office 617 570-0099
 Mobile 617 388-6621
 Fax 617 570-0011
 jarmstrong@prubostonrealty.com



Prudential

**Prime Properties
Boston Realty Group**